

## About Woodlands

Woodlands Wildlife Refuge, located in Alexandria Township, Hunterdon County began in the 1980's and is dedicated to the care and release of orphaned and injured wildlife. As communities grow, and habitat loss continues, the number of human/wild animal encounters increase.



Woodlands cares for hundreds of injured and orphaned mammals and reptiles each year and enjoys a high success



rate of releasing animals back to their natural habitats. Animals cared for at Woodlands include, but are not limited to,

raccoons, turtles, skunks, foxes, squirrels, woodchucks, mink, otters, bobcats, rabbits, opossums, bats, coyotes, porcupines and bears.



Woodlands has highly trained staff, volunteers and veterinarians providing animal care 7 days a week year round. All animals are maintained until they are healthy and strong enough to survive in the wild.



## Woodlands Wildlife Refuge

### Mission

*To receive, rehabilitate and release injured and orphaned native wildlife.*

*To educate people about wild animal habits and habitats.*

*To protect and create natural environments where people and animals exist in har-*



Woodlands Wildlife Refuge is a 501(c)(3) Charity Serving New Jersey's Wild and Human Communities.  
[www.woodlandswildlife.org](http://www.woodlandswildlife.org)



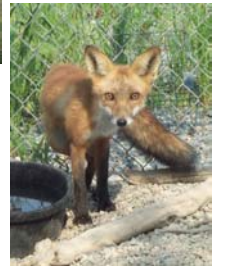
Woodlands Wildlife Refuge, Inc.  
P.O. Box 5046  
Clinton, NJ 08809  
Phone 908-730-8300  
Fax 908-730-8311  
[www.woodlandswildlife.org](http://www.woodlandswildlife.org)

*Photos are property of Woodlands Wildlife Refuge, Inc.*



## Woodlands Wildlife Refuge

### ENVIRONMENTAL EDUCATION PROGRAMS



### About our Programs

The goal of our education programs is to foster an appreciation and understanding of New Jersey's wildlife and habitats.

Our science based programs have been designed to promote coexistence among environment, wildlife and people.

## Program Information

Woodlands Wildlife Refuge's education programs have been developed by a committee of experienced educators and wildlife experts.

### Pre-K

#### Wildlife Discoveries

A hands-on discovery of animals and an introduction to Woodlands Wildlife Refuge. Activities include learning where animals live and what they eat.

Maximum number of attendees—25

### Grades K-4

#### Learning About Wildlife

Exploring the who, what and where of wildlife through an informative PowerPoint presentation. Includes hands-on activities to reinforce educational concepts.

### Grades 4-6

#### Our Wild Neighbors I

Provides an introduction to wildlife habitats, ecosystems and individual species. The care and treatment of wildlife at Woodlands, what to do if an animal "in need" is found and preventing encounters are also covered.

### Grades 6-8

#### Our Wild Neighbors II

*An in depth look...*

An in-depth learning experience investigating individual species, habitats, ecosystems and animal behavior. An introduction to Woodlands and an exploration into wildlife rehabilitation, release and research projects.

### Grades 9-12

#### The Science of Woodlands

An exciting PowerPoint presentation exploring the unique challenges Woodlands faces while administering medical treatment to wildlife, evaluating release habitats and monitoring post-release information. The applications of math, chemistry, biology and ecology in the field of wildlife rehabilitation will be discussed.

Program time—90 minutes.

### Adult

#### Second Chances

A photographic journey depicting the challenges and successes experienced at Woodlands. Included is a focus on special cases that highlight Woodlands' extraordinary efforts.

### Adult

#### Resolving Conflict

*Living with wildlife*

An informative program introducing Woodlands as well as a discussion identifying the most common causes and resolutions of human/wildlife conflicts. Prevention of wildlife encounters will be discussed.

**Our education programs are available to all public, private and homeschool groups, scout programs and badge requirements, clubs, church groups, senior's groups and all other community organizations.**

## How to Arrange for a Program

**Call: 908-730-8300 Ext. 3**

**Email: [wildlife\\_rehab@yahoo.com](mailto:wildlife_rehab@yahoo.com)**

### Additional Program Notes

- All of the school programs introduce students to concepts and content in life science, biology, and environmental science to meet current New Jersey Core Curriculum Standards.
- Programs average one hour unless otherwise indicated or requested.
- Programs can be modified to suit audience's specific needs.
- Live animals may or may not be included in offsite programs.
- Programs may include: activities, animal mounts, study skins, skeletons and handouts.
- Species specific programs may be available upon request.
- Offsite programs can be modified to suit audience size and needs.
- Program agreements and evaluation forms provided.
- Program dates are subject to availability.
- Please call for program pricing.

### Other Opportunities at Woodlands

**Volunteering      Internships**  
**Eagle Scout      Gold Award**  
**Service Projects**